

# INSIDE Idaho

Interactive Numeric & Spatial Information Data Engine

University of Idaho Library

[www.insideidaho.org](http://www.insideidaho.org)

*Idaho's statewide geospatial data clearinghouse*

## What We Do

- Organize digital geospatial data about Idaho and make it accessible and useable
- Provide an accurate, current and secure system where users can easily access and share digital geospatial data
- Provide leadership and expertise in the acquisition, integration, storage, retrieval and dissemination of Idaho's digital geospatial data
- Ensure that our applications, services and expertise are broadly known, effectively utilized and highly regarded

## What are Digital Geospatial Data and Geographic Information Systems?

Digital geospatial data are data that identify the geographic location of features on Earth such as roads, land parcels, or rivers. Geographic information is increasingly being recognized as a vital component of the information technology a modern society requires to operate efficiently. Geographic location is a key feature of 80-90% of all government data and Federal Agencies alone are spending \$2.5 – 3.0 billion annually on collection and management of geospatial data. Digital geospatial data are often accessed and analyzed through Geographic Information Systems (GIS). GIS has become an essential and valued tool for information management and decision support throughout all levels of government and many private businesses. Organizations throughout the state of Idaho are adopting GIS at an accelerating rate and making significant investments in GIS development.



Idaho continues to turn to GIS as a better way to manage an increasing workload and for the analysis to make important policy decisions. It is critical that as a state the necessary steps are taken to ensure that the components which make up Idaho's geospatial data infrastructure are secure, are current and accurate, are readily available and usable to those who need them, and are interoperable. GIS technology provides Idaho with the tools and information needed to analyze and solve critical issues surrounding economic development, the demands of growth, and emergency and natural resource management.

## Why is INSIDE Idaho Critical to the State?

- 80% of government data has a geographic component and the majority of the cost associated with a GIS system is related to the development and maintenance of its spatial data. Therefore, a coordinated and collaborative effort is essential
- Save taxpayers money by limiting duplication with digital geospatial data
- Provides leadership and expertise in the storage, integration, archiving, and dissemination of digital geospatial data
- Provides a framework for cost-effective collaboration, the exchange of technological expertise and ideas, and the transfer of digital geospatial data
- The amount of data transferred has grown steadily on the INSIDE Idaho website over the past five years. INSIDE Idaho has undoubtedly become the primary digital geospatial data source for Idaho's educational institutions, government agencies, business and industry, and private citizens

**University of Idaho**  
A LEGACY OF LEADING

### INSIDE Idaho

Library

University of Idaho

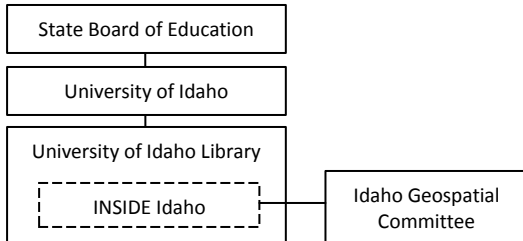
Moscow, Idaho 83844-2350

Gail Eckwright ([gze@uidaho.edu](mailto:gze@uidaho.edu))

Bruce Godfrey ([bgodfrey@uidaho.edu](mailto:bgodfrey@uidaho.edu))

(208) 885-2507 or (208) 292-1407

## Organizational Structure



INSIDE Idaho is housed at the University of Idaho Library. It is provided guidance by an administrator with input from the Idaho Geospatial Committee (IGC). INSIDE Idaho staff oversees the clearinghouse's design, implementation, and operations.

## Funding INSIDE Idaho

The bulk of funding for INSIDE Idaho came from a 1999 Congressional Appropriated National Leadership grant awarded to the University of Idaho Library by the Institute of Museum and Library Services. Additionally, INSIDE Idaho has benefited from sponsorship from the University of Idaho Library and subsequent grants from Federal agencies.

In order to maintain this resource, a stable funding strategy that allocates costs to the sectors that use the services and data provided by the program need to be secured. State appropriations are being sought for core services – which include maintaining the INSIDE Idaho clearinghouse and providing general access – in order to ensure Idahoans can access, integrate, display, and analyze their digital geospatial data.

## Who Uses INSIDE Idaho?



INSIDE Idaho responds to thousands of inquiries each month. In 2007 the Web site had almost 4 terabytes of data transferred. Most of the information and data INSIDE Idaho provides is available online. However, staff assistance is available for locating, obtaining, using and publishing information. Users of our services range from computer novices to information technology professionals including:

Students, faculty and researchers  
Business and industry sectors

GIS professionals  
K-12 teachers and students

Government decision makers  
Private citizens

Some highlights on the types of data available for users include pre-formatted maps, thousands of geospatial data themes, Web applications, and Web services.

## INSIDE Idaho... Serving the State of Idaho

"INSIDE Idaho is the realization of a long held vision by the GIS user community to establish a geospatial data clearinghouse within the library environment. Increasing data access and providing a repository for GIS products leverages significant additional value from the investment made by Idaho governments in geographic data."

**Hal N. Anderson, Administrator**  
Planning and Technical Services Division  
Idaho Department of Water Resources

"This is the finest site for my Advanced Geology students' research!"

**Tobey E. Jossis**  
Centennial High School, Boise, ID

"No citizens ever or anywhere had more access to the redrawing of their legislative and congressional districts than Idahoans did after the 2000 census. It could not have happened without INSIDE Idaho."

**Ross Borden**  
Former Principal Budget & Policy Analyst and  
Redistricting Project Manager  
Idaho Legislative Services Office

"I have been using INSIDE Idaho's Internet map server to access the USGS 1-meter digital orthophotos with ArcGIS and love it. It has saved me a ton of work and expense."

**Kenny Boltz, Former GIS Analyst**  
Kootenai Electric Cooperative, Inc.