

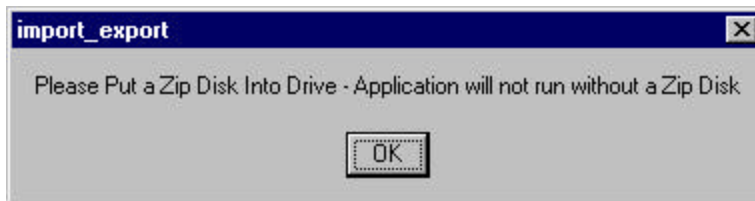
# Idaho Redistricting Plan Management Application

The Idaho Redistricting Plan Management application allows the easy creation, importing, and exporting of Legislative Plans from AutoBound. To Start the application, put in a zip disk before start, then double click on the Desktop shortcut.



If No Zip Disk in Drive:

The application will check to see if you have Zip disk in the Zip Drive. If no zip disk is found the following message will appear. Click **OK**. The screen will clear and the program will stop.



Place a zip disk into the drive and restart the program by double-clicking on the Desktop Shortcut.

When the Zip disk is present, the Idaho Plan Manager will startup. The Plan Manager will provide the user three plan management options.

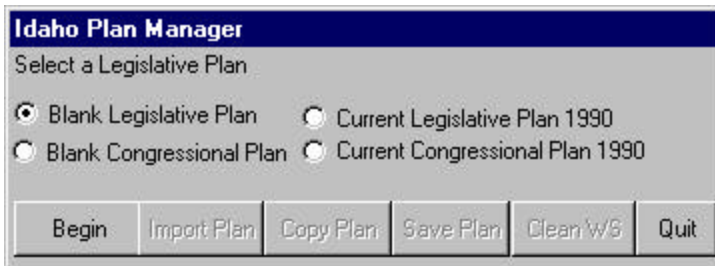


- *Create a New Plan from Scratch*
- *Import an Existing Plan*
- *Copy Plan (For Versioning)*

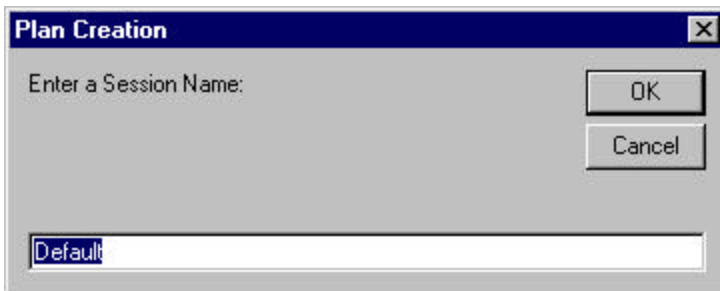
### Create a Plan

Creates a new blank plan

By clicking on the Create Plan Button, the application will ask you of what type of Legislative Plan you want to use. Your options are a 'Legislative Plan (35 Districts)' or a 'Congressional Plan (2 Districts)' or the '1990 Legislative Plan' or the '1990 Congressional Plan'.



After the plan has been selected, the program will ask you for the Session Name. This name will be put on the zip disk to organize the plans. The default value set, is a Date Stamped Value (For Example: April23-2001)



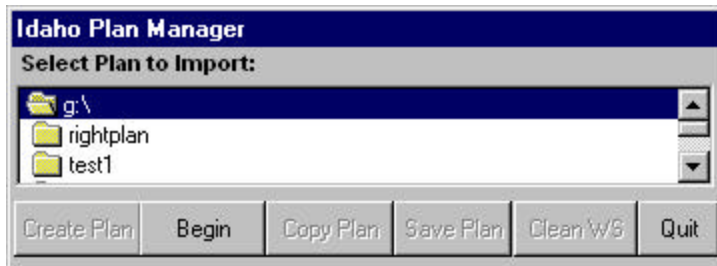
The session name must be unique. If the same Session name has been selected, a similar popup window will appear asking you for a new name. **NOTE: Plans cannot be over-written on the zip disk, just copied or deleted.**

Once the session name has been entered, the application copies a blank plan to the zip disk and to temporary computer space, and starts the AutoBound ArcView application.

### **Open a Plan**

Importing a plan allows you to reopen a plan you have previously been working on, and to continue working on it.

By clicking on the Import Button, the application will ask you of which plan to import into the AutoBound Environment. Just click on the session name, and click the begin button. The program will warn the user if directory is not a Plan Session.

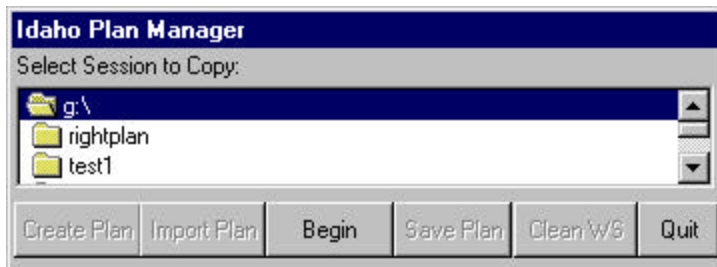


Once clicking on **Begin**, the application will copy the plan to the zip disk and temporary computer workspace, and start the AutoBound ArcView application.

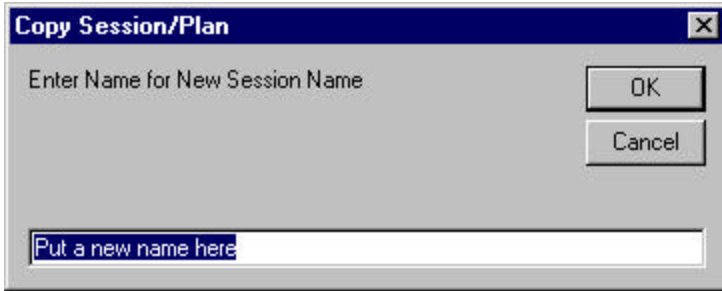
### **Copy a Plan**

To make a copy of an existing plan and save it under a different name.

By clicking on the Copy Plan Button, the Plan Manager Interface will ask the user to select the plan to copy. Click on the plan and hit '**Begin**'.

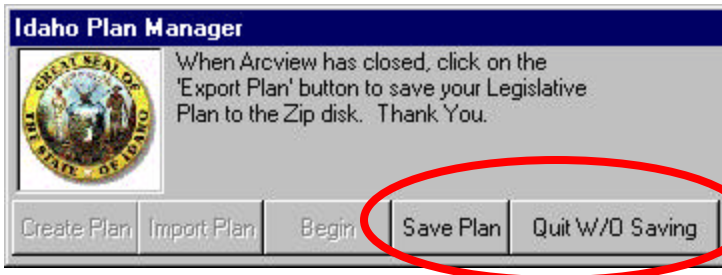


The following popup window will appear. Enter a name in the box, preferably with NO SPACES. Then Hit ok. The Newly Renamed Session will be copied into the temporary workspace and the AutoBound ArcView Application will start.



### **Saving Plans and Not Saving Plans**

During the use of the AutoBound ArcView Application, the Idaho Plan Manager will remain active on the desktop. Once an users session is done, close ArcView. After ArcView is closed, click on the **Save Plan** Button. This will have the Export program copy the User Plan from the temporary system workspace to the Zip Drive. The plan will be permanently removed from the computer, but stored on the Zip disk. Please wait for the Zip disk light to stop, before removing the Zip Disk.



### **Clean Workspace**

The clean workspace application allows the cleaning of the plan directory. Cleaning a plan directory will be needed if ArcView crashes and/or the computer crashes. The plan directory is always cleaned up after the Plan Manager is shutdown, but if trouble does occur with plans, it is best to run the clean application to remove any doubt that a corrupt plan is affecting the system. Note: Corrupt plans on the zip drive can simple deleted from the windows file manager.

